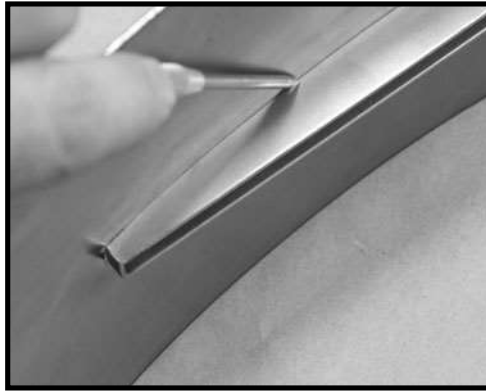
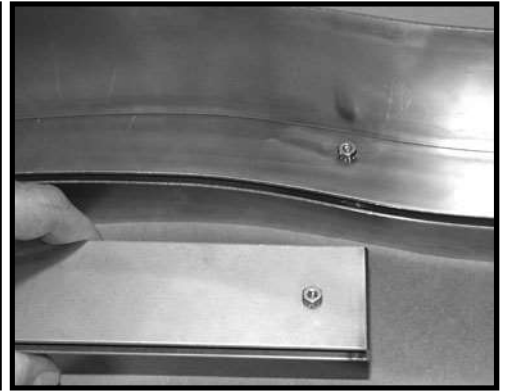


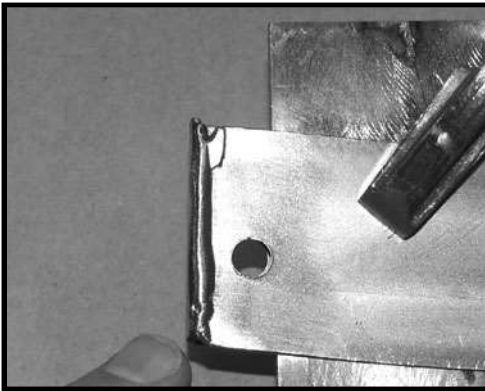
1) Mark and cut out slot for LED assembly. Make a clean cut to minimize the weld process.



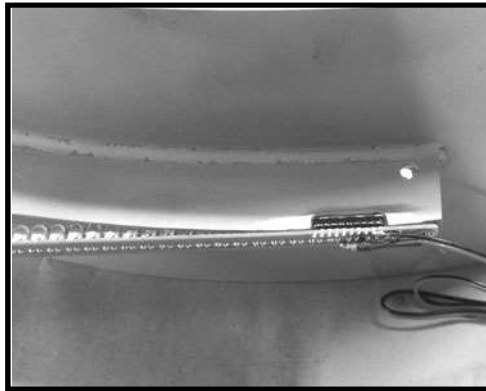
2) Assemble lens and steel plates and slip it into the slot. Position the assembly and mark where to trim. Make sure the bolt holes are accessible.



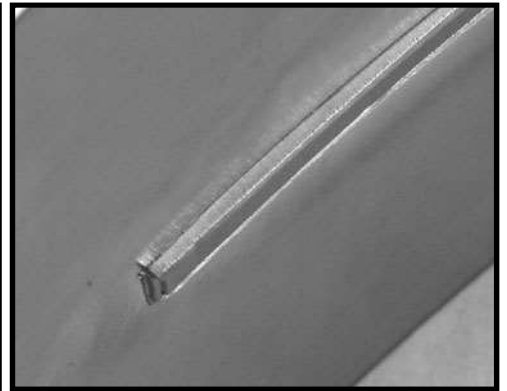
3) The back can be trimmed if you have clearance issues but it is not necessary.



4) Weld ends. Use a 1/4" steel welding plate spacer or make a stack of steel plates that equal the thickness of the lens. Align mount hole and clamp together with welding plate in the middle.



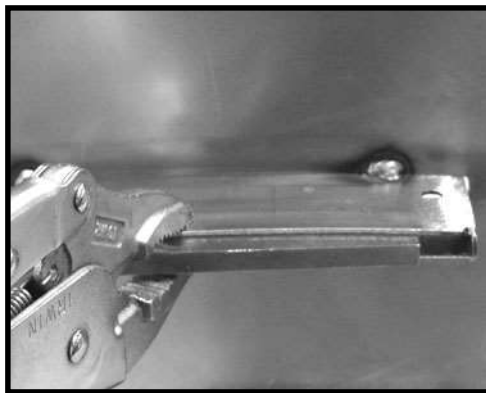
5) Make sure the back side has proper clearance for the electronics. Check both sides, there is a small resistor on the under side of this LED strip. (NOTE: not all LED strips have these components. This may or may not be necessary for you.)



6) Trim the steel pieces to fit, leaving a 1/8" of material. Do not trim the lens at the same time. Trim it separately.



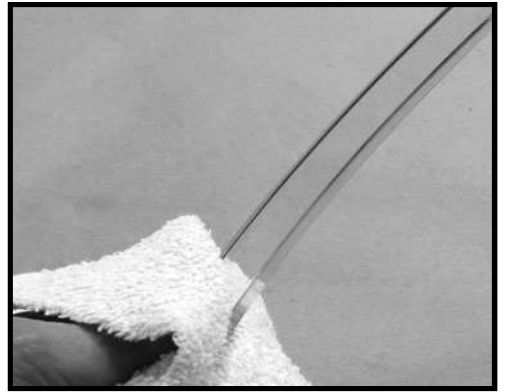
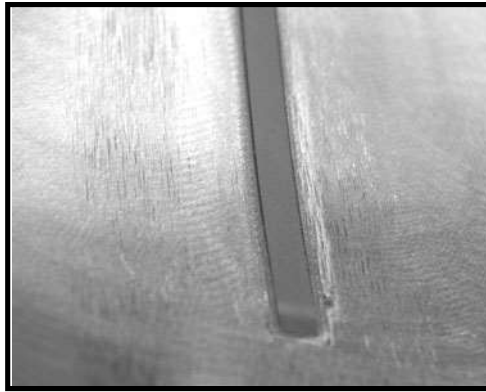
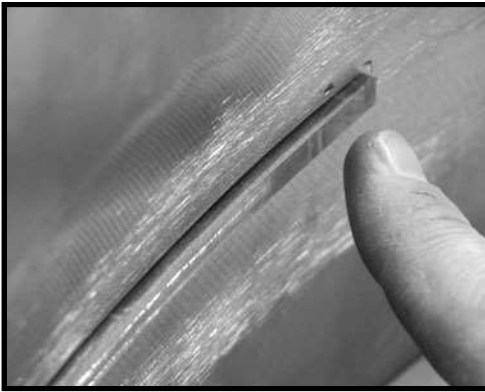
7) Spot weld the housing into place with the 1/8" protruding. Always have the steel welding plug clamped in place.



8) The steel plug will help keep everything in alignment and work as a heat sink to minimize distortion.



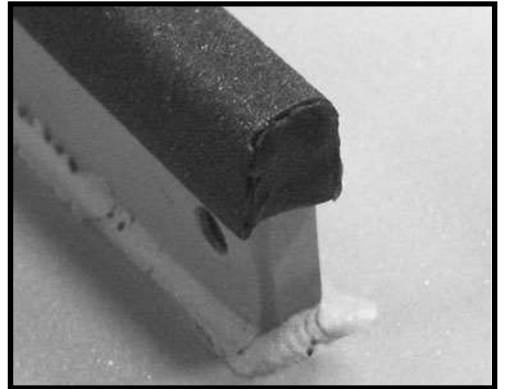
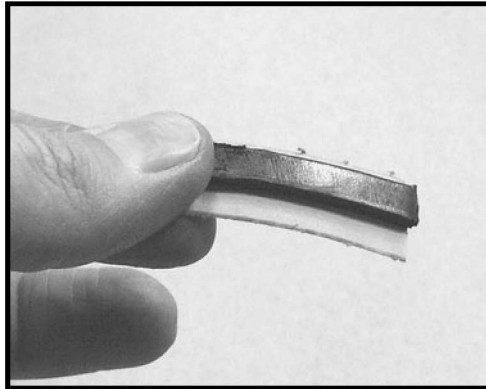
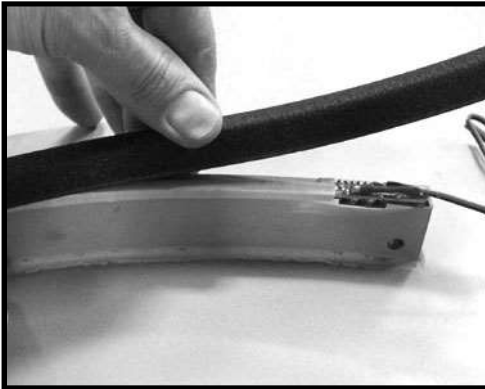
9) Now weld completely. Go slow! Too fast and you will warp the panels beyond repair.



10) Dress the welded area and prepare it for the lens. Pre fit the lens. Bolt it in place then begin sanding it down. Use 50 grit to cut it down within an 1/8". Then use finer abrasives.

11) A small amount of body filler will be needed, so do not sand the lens down too far. Complete the body work and paint work.

12) Polish the lens on all four sides for best results.

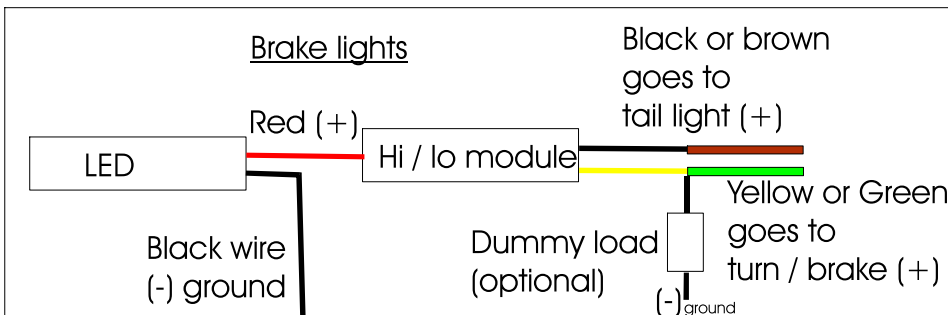
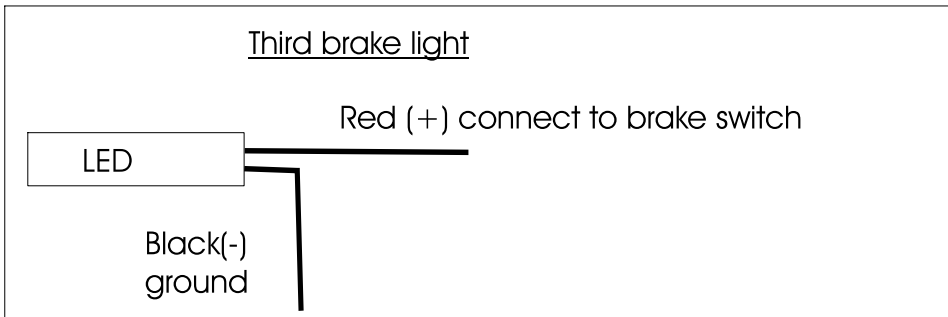


13) Final assembly: Bolt lens in place. Lay LED strip into slot. And tape down with 3/4" tape. Trim rubber U channel to length and press over LED.

14) You kit comes with a small strip of black sticky putty. Use this to seal the ends of the U channel.

15) Pack the sticky putty into the ends as shown to seal the channel.

## Wiring Diagram



Note: Dummy loads are necessary when more resistance is needed to make the flasher work properly. Available at [haganauto.com](http://haganauto.com) Have questions? email them to [info@haganauto.com](mailto:info@haganauto.com)